

000266

Tax Assessment
for Sadsbury Township,
Lancaster County

1799

 Lancaster**History**

A Return of the Names and
 Sashbury Township with their
 Valuation for the year 1799

Mens Names	Lands	Houses	hired Cattle	Horses	Grain Mills	Saw Mills	Tanneries	Trades Occupations Callings	Valuation
								Mason	200 - 0 - 0
								Farmer	490 - 0 - 0
								Taylor	050 - 0 - 0
Asderton John		1	4					Junitor	040 - 0 - 0
Bailey Francis	200	3	5					Farmer	250 - 0 - 0
Brooks abner	70	1	1					Farmer	050 - 0 - 0
Bell Richard	99	1	2						
Brown Alben		1	1						
Bayerz Lang		1	1						
Cooper John	190	3	3					Shunter	020 - 0 - 0
Cooper George	100		4					Shunter	250 - 0 - 0
Chamberlaine Joseph	145	1	2					Farmer	030 - 0 - 0
Chamberlaine James	200	1	7					Farmer	210 - 0 - 0
Cooper Calvin		1	1						
Cooper Truman	188	2	2						
Cooper James Jun		1	2					Carpenter	010 - 0 - 0
Cooper John	96	1	3					Miller	660 - 0 - 0
Chamberlaine Jos Jun		1	2					Tanner	030 - 0 - 0
Doauchen Adam	200	2	4					Farmer	250 - 0 - 0
Donnals John			1					Shoemaker	005 - 0 - 0
Duberry John			1					Sadler	005
Swans Samuel	160	1	1					Blacksmith	120 - 0 - 0
Fulton Thomas		2	3					Farmer	060 - 0 - 0
Fogel George	115	2	2					Farmer	160 - 0 - 0
Graham Robert	175	2	2					Farmer	200 - 0 - 0
Graham James Jun		2	2					Farmer	040 - 0 - 0
Graham James	100							Farmer	075 - 0 - 0
Guest Joseph	190	2	4					Farmer	250 - 0 - 0
Griffith Isaac	130	2	2					Farmer	250 - 0 - 0
Gubbin John	90	2	2					Farmer	150 - 0 - 0
Hoffman Francis		3	3					Farmer	050 - 0 - 0
Hend Wm & Stephen	150	4	4					Farmer	220 - 0 - 0
Herd Jn ^o Sen		1	1					Farmer	000 - 0 - 0
Hall Stephen	99	1	1					Farmer	160 - 0 - 0
Hood George	112	2	2					Farmer	160 - 0 - 0
Hoore Isaac	150							Junkeeper	500 - 0 - 0

SOME WRITING MISSING

ued

Moore Robert	200	2	2
Moore Andrew	150		
Moore Andrew Jun		2	2
Muller James			1/2
Murphy John	190	1	4
Murray John	100	1	2
M'Guire Philip	50	1	1
Money George Jun	190	1	3
Mr Cray Henry			1
Muller Nixon Jun	200	4	5
Mr Kay James	160		1
Moore John	220	3	7
Moore Genor		2	4
McLaughlan John	60		3
Moore James	12	1	2
Noble James	250	3	12
Oatman George	170	4	3

Trading Miles	Sale Miles	Job yards	Trades Occupations Callings	Valuation	Mens Names
			Carpenter	300.0.0	Pure George
			Farmer	650.0.0	Powell Levy
			Farmer	275.0.0	Powers William
			Farmer	050.0.0	Patterson Widow
			Spinster	075.0.0	Pettit Daniel
			Farmer	040.0.0	Pasmore John
			Farmer	350.0.0	Reed Widow
			Weaver	005.0.0	Reay James
			Farmer	300.0.0	Rockey Phillip
			Woodwinder	316.0.0	Rockey Jacob
			Farmer	280.0.0	Thomas James
			Farmer	050.0.0	Simmons Robert
			Weaver	005.0.0	Slorich Jas & David
			Farmer	460.0.0	Simmons Joseph
			Farmer	300.0.0	Smith Ephraim
			Farmer	050.0.0	Smith Ephraim
			Stru Melon	005.0.0	Smith Joseph
			Smithson	250.0.0	
			Farmer	110.0.0	
			Farmer	110.0.0	Teas John
			Cooper	050.0.0	Townsend John
			Blacksmith	150.0.0	Thompson Nathan
			Cooper	005.0.0	Taylor James
			Farmer	550.0.0	Tweed Wm
			Weaver	150.0.0	Tweed James
			Muller	650.0.0	Tweed Joseph
			Farmer	050.0.0	
			Muller	120.0.0	
			Stockkeeper	050.0.0	Wright Alexander
			Farmer	650.0.0	Whitson Thomas
					Williams Samuel
			Farmer	200.0.0	Williams John

Continued

Valuation	Mens Names	Lands	Horses	horns cattle	Slaves	Grain	Fishing Mills	Saw Mills	Iron Yard	Trades Occupations	Valuation
										Callings	
300.0.0	Pierce George		1	1						Major	200.0.0
650.0.0	Powell Levy	242	3	5						Farmer	490.0.0
275.0.0	Powers William		1	3						Taylor	050.0.0
050.0.0	Patterson Widow	50		1						Juniter	040.0.0
075.0.0	Petit Daniel	160	3	4						Farmer	250.0.0
040.0.0	Pasmou John		1	3						Farmer	050.0.0
350.0.0	Reed Widow		1	3						Juniter	020.0.0
005.0.0	Rehay James	120		3						Shewsmith	250.0.0
	Rockey Phillip		2	2						Farmer	030.0.0
300.0.0	Rockey Jacob	130	3	3						Farmer	210.25.0
310.0.0	Rockey James										
280.0.0	Simmons Robert			1						Carpenter	010.0.0
050.0.0	Smith David	260	6	12		2				Miller	660.0.0
05.0.0	Simmons Joseph			1						Carpenter	040.0.0
300.0.0	Smith Ephraim	12	2	2						Farmer	225.0.0
050.0.0	Smith Ephraim		2	3						Farmer	030.0.0
005.0.0	Smith Joseph	150	2	2						Farmer	150.0.0
250.0.0											
110.0.0	Teas John	100		2						Cordwainer	180.0.0
050.0.0	Townsend John	100	2	2						Farmer	150.0.0
150.0.0	Tompson Nathan	250	2	5						Farmer	380.0.0
005.0.0	Taylor James	200	1	3						Farmer	250.0.0
550.0.0	Tweed Wm	200	2	4						Farmer	300.0.0
150.0.0	Tweed James	100	2	3						Taylor	150.0.0
650.0.0	Tweed Joseph			2						Carpenter	010.0.0
050.0.0											
120.0.0	Wright Alexander			3						weaver	015.0.0
050.0.0	Whitson Thomas	100	1	3						Farmer	160.0.0
650.0.0	Williams Samuel	300		1						Farmer	650.0.0
200.0.0	Williams John	400	1	2						Farmer	600.0.0

Continued

Names	Lands	Horses	Swine	Cattle	Slaves	Grain Mills	Sawing Mills	Sawmills	Tanneries	Trades Occupations Callings	Valuation
Walker Isahel	200	2		2						Farmer	200
Walker Joseph	275	2		4	2					Farmer	490 - 0 - 0
Williams Joshua	75	1		2						Stone Mason	100 - 0 - 0
Nonresidents											
Benjamin Boechler	200										250 - 0 - 0
James Thompson	80										120 - 0 - 0
George Egar	100										180 - 0 - 0
Dr. J. Steel	150										190 - 0 - 0
Focemers											
John Wagon											2
Joseph Guest											
March M. Conn											
Calat Miller											
Moses Moore											
John Livingston											
Paul March											
Hugh McMin											
William Cooper											
Charles Pettit											
John Bratton											
Barney Clark											
John Tucco											
Alexander Morson											
Wm Minnie											
John Donnal											
Jamiah Gray											

We the above and assistant assessors
do Certify that the above Valuation is
Equivalent on the inhabitants of said
Township according to our best Skill and
Knowledge

April 2^d 1799

Nathan Thompson
James Noble
James Taylor

Sadbury Duplicate county Tax for the Year 99

Addison John	50	49	Loughias Robt & Wm	2	92
Bailey Francis	3	56	Sagawick Conrad Land part 2.5	2	16
Baughes Abner	0	164	Lesly John Land part 1.17.7	2	59
Bell Riv. Landlords 7.16.3	2	00	Levingston Wm	0	82
Brown Alban	0	36	Leinton Hugh	0	16
Byers James	0	16	Moore Robert	3	53
Cooper John	5	65	Miller James	0	16
Cooper George	1	72	Moore Amos	1	194
Chamberlain Joshua	1	178	Moore Andrew Junr	0	82
Chamberlain James	2	912	McCracken John	0	26
Cooper Calvin	0	411	Murray John	2	011
Cooper Truman Land part 3.7.5	3	133	McCray John	0	1711
Cooper James Junr	0	82	McGuire Phillip	0	82
Cooper John	1	46	Money George	1	46
Chamberlain Joshua Junr	0	411	Money George Junr	0	16
Draucker Adam	2	011	McCray Henry	0	16
Donnel John	0	16	Miller Hieronimus Land 3	3	100
Dubordy John	0	16	McKee Samuel Land part 1.2	1	46
Evans Samuel	0	158	Moore John	5	80
Shulton Thomas	0	98	Moore Genor	0	82
Hogel George Land part 7.2.6	1	60	McLaughlin Jnr Land 7.6	0	99
Graham Robert	1	129	Moore James	0	82
Graham James Junr	0	66	Moble James	5	60
Graham James Land part 12/3	0	123	Batman Geo Land part 7.4.7	1	129
Greest Joseph	2	110	Bene George	0	33
Grieffith Isaac	2	110	Powel Levey	4	02
Gribben John	1	66	Powers William	0	82
Hoffman Francis	0	82	Patterson Widow	0	66
Hurd Wm & Stepher	1	163	Pettet Daniel	2	011
Hall Stepher	1	63	Pasmore John	0	88
Wood Geo Landlords part 7.3.0	1	63	Reed Widow	0	33
Hoore Isaac Landlords 3.14.0	4	110	Rhea James	2	011
Juvin William	2	90	Roskey Phillip	0	411
Juvin Benjamin	5	65	Roskey Jacob	1	145
Juvin Ethiel	2	50	Simmons Robert	0	26
Jones Enos	0	411	Strett Ja. & Davis	5	50
Kirkwood widow	0	125	Simmons Joseph	0	26
Konahan James	0	66	Smith Ephraim. Sr.	2	06
Keena Jacob	2	172	Smith Ephraim	0	33
Kid Wm	0	16	Smith Joseph Land 1.0.0	1	46

Continued

Deas John Lanoff 7-2-0	1 46
Townsend John	1 46
Thompson Nathan	2 39
Taylor James	3 100
Tweed William	2 50
Tweed James	1 20
Tweed Joseph	0 26
Wright Alexander	0 38
Whitson Thomas	1 30
Williams Samuel	5 30
Williams John	4 150
Walker Isabel	3 195
Walker Joseph	3 105
Williams Joshua	0 164
Nonresidents	
Benjamin Bruckbill	2 011
James Thompson	0 160
George Eger	1 94
Ind. of James Steele	1 110
Deacons	
John Watson	0 150
Joseph Guest	0 150
Mark Mhon	0 150
Caleb Miller	0 150
Moses Moore	0 150
John Livingston	0 150
Jacob Mumbich	0 126
Hugh Minninn	0 126
William Cooper	0 150
Charles Pettit	0 150
John Beatty	0 76
Barney Clark	0 126
John Tweed	0 150
William Minnis	0 150
John Donnel	0 150
Alexander Murray	0 150
Jeremiah Crowley	0 100

We do certify the above
to be a just & true
Account

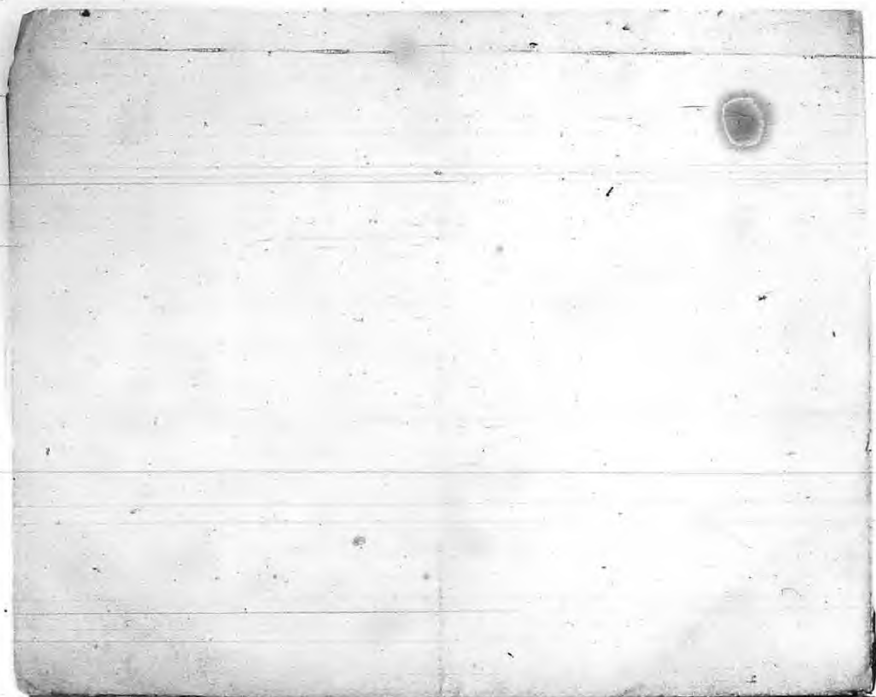
Nathan Thompson
James Stoffle
James Taylor

Amount

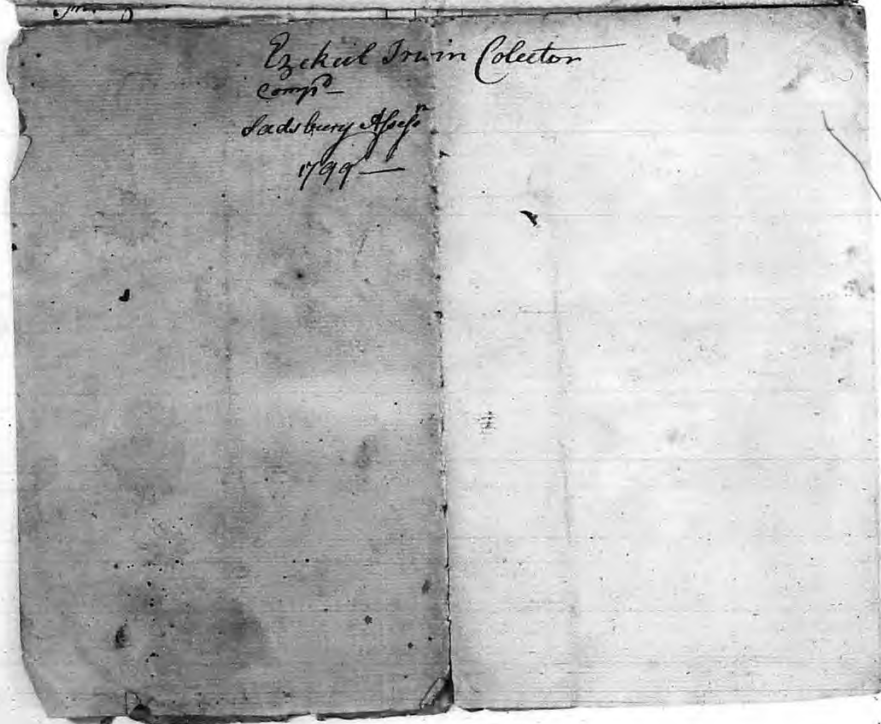
23,7 1/2
22,12 0 1/2
31,12,9 1/2
29,9,8 1/2
37,8,7
17,16,6
4,2,6

£ 166 9 3

000275



Ezekiel Irwin Collector
Comp.
Sadsbury House
1799



SADSBURY TOWNSHIP

The tax records for this township which are here reproduced cover the following years:

1750	1785-1793
1754	1797-1803
1756-1759	1805-1822
1763	1824-1828
1769-1770	1830
1772	1836
1775	1839-1840
1777-1783	Undated

On this microfilm, a circle in the upper left-hand corner of a frame indicates the beginning of a new document.



COMMONWEALTH OF PENNSYLVANIA
PENNSYLVANIA HISTORICAL AND MUSEUM COMMISSION

BUREAU OF ARCHIVES AND HISTORY
WILLIAM PENN MEMORIAL MUSEUM AND ARCHIVES BUILDING
BOX 1026
HARRISBURG, PENNSYLVANIA 17108



LANCASTER COUNTY, PENNSYLVANIA

TAX RECORDS, 1748-1855

Arranged Alphabetically by Political Subdivision

This Microfilm Reproduces Original Documents
in the Custody of the
LANCASTER COUNTY HISTORICAL SOCIETY
230 North President Avenue
Lancaster, Pennsylvania 17603

Microfilmed by the
Pennsylvania Historical and Museum Commission
Division of History
1971

INTRODUCTORY NOTE

The microfilm of which this roll constitutes a part reproduces original tax records now in the custody of the Lancaster County Historical Society. Totalling sixty-eight boxes and seven volumes, these records were created during the assessment and collection of taxes in the political subdivisions of that county. They were transferred to the historical society by the Lancaster County Commissioners in 1961.

The bulk of these records, amounting to sixty-seven boxes and dating from the period 1748-1855, are of the following subdivisions (townships unless otherwise identified) which remain today in Lancaster County:

Bart	Lancaster (Township)
Brecknock	Lancaster Borough
Caernarvon	Lancaster City
Cocalico	Leacock
East Cocalico	Little Britain
West Cocalico	Manheim
Colerain	Manor
Conestoga	Martic
Donegal	Mount Joy
Drumore	Rapho
Earl	Sadsbury
Elizabeth	Salisbury
Hempfield	Strasburg
Lampeter	Warwick

The remaining records, comprising one box and seven volumes, are of townships which were formerly in Lancaster County but are today in Dauphin and/or Lebanon counties (erected in 1785 and 1813, respectively). These particular records date from a shorter period: that of 1750-1788. The townships to which they pertain, and the counties in which these townships are now located, are as follows:

Bethel (Lebanon)	Lebanon (Lebanon)
Derry (Dauphin)	Londonderry (Dauphin, Lebanon)
Hanover (Dauphin, Lebanon)	Paxton (Dauphin)
Heidelberg (Lebanon)	Upper Paxton (Dauphin)

The specific tax records reproduced on this roll, which were filmed by the Pennsylvania Historical and Museum Commission through an arrangement with the society, are identified on the next frame.